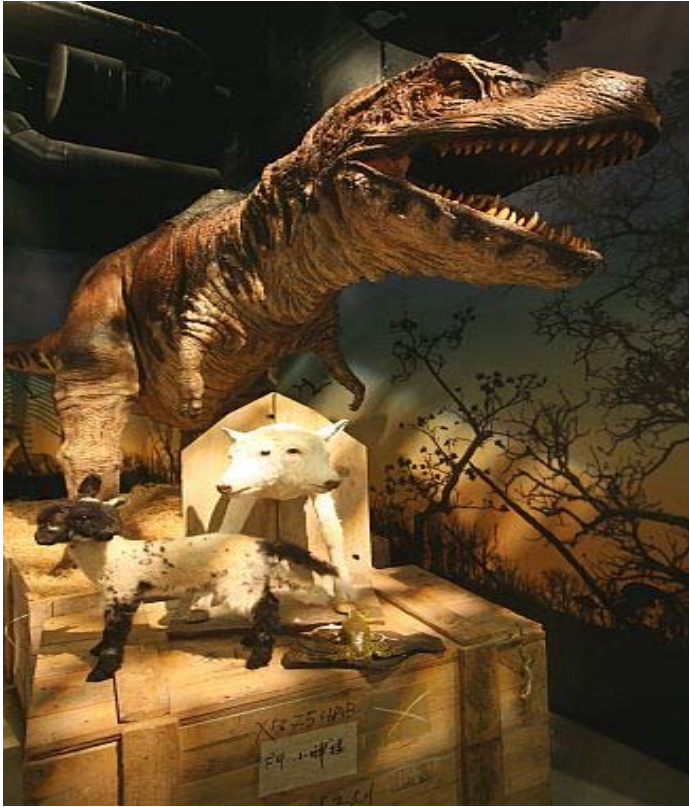


Ripley's Believe It or Not!



Located in the heart of Piccadilly Circus, Ripley's Believe It or Not! Museum offers visitors the ultimate insight into the world of the odd and bizarre.

من ميدان بيكاديللي ، ريبلي صدق أو لا تصدق! يقدم المتحف للزوار البصيرة في نهاية المطاف إلى كل شيء شاذ و غريب في العالم

Included Highlights

- Europe's largest Marilyn Monroe collection!
- Fast-Track Entry

Marvel at over 500 weird and unusual artifacts in over twenty themed galleries spanning four floors.

Whether examining genuine shrunken heads, getting a close up view of an actual section of the Berlin Wall, or experimenting with a real life vampire killing kit, the truly amazing Ripley's Believe It or Not! collection proves that fact can indeed be stranger than fiction. For over 40 years, Robert Ripley - the real-life Indiana Jones - travelled the world collecting the unbelievable, the inexplicable, the one-of-a-kind. Now, for the first time in London, this bizarre collection can be viewed in person. Come and explore the weirdest place in London...

Mirror Maze - The mirror maze challenge provides family friendly entertainment that will appeal to children, teens and adults alike. The maze consists of a series of columns and arches surrounded by hundreds of mirrored reflections in every direction. The floor lighting enhances the "infinity effect" by giving the illusion of continuing hallways, when in fact you may be at a dead end! The more participants in the maze, the more confusing it is. See hundreds of reflections of yourself in every direction. The mirror maze challenge is to "get lost" and find your way out again. The mirror maze is not included in the general admission price, but can be purchased on site when you get to Ripley's Believe It or Not! Backwards or forwards, it's never the same experience twice!

The London Pavilion

1 Piccadilly Circus, London W1J 0DA - Nearest underground: Piccadilly Circus (Piccadilly & Bakerloo lines).

Opening Hours: Daily: 10:00am – midnight - Last Admission: 10.30pm